

IMPORTANT

USE ONLY GENUINE SCHUTT PARTS

Failure to use genuine Schutt replacement parts or materials may negatively affect the performance of your helmet and may void the warranty.

SCHUTT HELMET FITTING INSTRUCTIONS

schutt
SPORTS

Schutt Sports, 710 S. Industrial Dr., Litchfield, IL 62056
800.426.9784

FITTING

SCHUTT AIR LINER HELMETS



Vengeance DCT | Vengeance VTD | Vengeance VTD II | Vengeance Pro | AiR XP Pro | AiR XP Pro SV
 AiR XP Pro VTD | AiR XP Pro VTD II | AiR XP | DNA Pro+ | Youth Vengeance DCT | Vengeance DCT Hybrid+
 Youth AiR XP Pro | Youth AiR XP | XP Hybrid+ | Youth DNA Pro+ | Recruit Hybrid+



STEP 1

Proper fit is essential for the most effective performance of any helmet system. The helmet functions as a system and must be properly fit for optimum performance. The player must be made aware of the importance of a proper fit. Measure the player's head as shown (approximately 1" above the eyebrows around the widest part of the head), using the chart for a size guideline.



STEP 2

All Schutt helmets feature a 4-Point High chin strap. Other styles and sizes available. The chin strap should be attached to the helmet underneath the faceguard, not above it. Tighten the chin strap so that it is snug and centered on the player's chin.



STEP 3

Place the helmet on the player's head to properly inflate the air liner inside the helmet. To do this, we recommend using a Schutt #7799 inflation pump and needle. Be sure to lubricate the needle generously; glycerin is recommended. DO NOT USE PETROLEUM BASED PRODUCTS, SUCH AS PETROLEUM JELLY. DO NOT WET THE NEEDLE WITH YOUR MOUTH. Do not force the needle into the port; doing so may puncture the liner's opposite wall.



STEP 4

Another key component to properly fitting the helmet is the fit of the jaw pads. The jaw pads should be snug against the player's face, flush with his jaw, without pushing too forcefully into his cheeks. Jaw pad sizes are measured in thicknesses: $\frac{5}{8}$ ", $\frac{7}{8}$ ", 1, $1\frac{1}{8}$ " and $1\frac{3}{8}$ ". Helmets feature AiR Maxx TPU Jaw Pads, with the varsity models coming standard with either $\frac{5}{8}$ " or $\frac{7}{8}$ " jaw pads; the youth models come standard with $1\frac{1}{8}$ " jaw pads.



STEP 5

Begin with the bottom inflation port on the back of the helmet. This port inflates the Lateral Air Liner (the sides and back) of the helmet. Proper inflation will usually require 0-3 pumps, but that will vary. If too much air enters the liner, you can release it by twisting the valve. Proper inflation of the liner will hold the helmet snug against the player's head but not overly tight.



STEP 6

To ensure the helmet fits properly, try rotating the helmet on the player's head. It should not slip. The player's hair and skin on the forehead should move with the helmet as it's rotated, but the helmet should not move independently of the head. When properly fit, the helmet should fit snugly on the player's head, without being too tight, and should move only as the head moves.



STEP 7

When finished inflating the Lateral Air Liner, repeat the process for the Crown Air Liner, which is the top inflation port on the back of the helmet. Proper inflation will usually require 0-2 pumps, but that will vary. Crown liner adjusts the height of the helmet on the player's head.
NOTE: The Vengeance Pro does not have an inflatable crown liner. Two interchangeable crown liners are included for sizing purposes.



STEP 8

Properly fitted on a player, the helmet's front edge and nose bumper should be approximately 1" above the player's eyebrows. Minor adjustments can be made by adjusting the inflation of the Crown Air Liner. It is the interaction between the player and the person fitting the helmet that ensures proper fit and optimum helmet performance.

SIZING CHART

Vengeance DCT, Vengeance VTD, Vengeance VTD II, Vengeance Pro, AiR XP Pro, AiR XP Pro SV, AiR XP Pro VTD, AiR XP Pro VTD II, AiR XP, Youth AiR XP, DNA Pro+, Youth Vengeance DCT, Vengeance DCT Hybrid+, Youth AiR XP Pro, XP Hybrid+, Youth DNA Pro+, Recruit Hybrid+

HELMET SIZE	HEAD SIZE	HEAD CIRCUMFERENCE
Small	6 - 6 $\frac{1}{2}$	19 - 20 $\frac{1}{2}$ "
Medium	6 $\frac{1}{2}$ - 7	20 $\frac{1}{2}$ - 22"
Large	7 - 7 $\frac{1}{2}$	22 - 23 $\frac{1}{2}$ "
X-Large	7 $\frac{1}{2}$ - 8	23 $\frac{1}{2}$ - 25"
2X-Large	8+	25"<

FITTING

SCHUTT COMFORT LINER HELMETS



Vengeance Hybrid | XP Hybrid | Recruit Hybrid | AiR Standard III | AiR Standard V



STEP 1

Proper fit is essential for the most effective performance of any helmet system. The helmet functions as a system and must be properly fit for optimum performance. The player must be made aware of the importance of a proper fit. Measure the player's head as shown (approximately 1" above the eyebrows around the widest part of the head), using the chart for a size guideline.



STEP 2

These helmets feature a 4-Point High chin strap. The chin strap should be attached to the helmet underneath the faceguard, not above it. Tighten the chin strap so that it is snug and centered on the player's chin.



STEP 3

Jaw pads are another key component to properly fitting the helmet. The jaw pads should be snug against the player's face, flush with his jaw, without pushing too forcefully into his cheeks. Jaw pads are measured in thicknesses. Other sizes and styles are also available. The Hybrid Series and AiR Standard V come standard with 1 1/8" jaw pads. AiR Standard III come standard with 1 1/4" jaw pads.



STEP 4

Properly fitted on a player, the helmet's front edge and nose bumper should be approximately 1" above the player's eyebrows.

It is the interaction between the player and the person fitting the helmet that ensures proper fit and optimum helmet performance.



STEP 5

To ensure the helmet fits properly, try rotating the helmet on the player's head. It should not slip. The player's hair and skin on the forehead should move with the helmet as it's rotated, but the helmet should not move independently.

SIZING CHARTS

Vengeance DCT Hybrid, XP Hybrid, Recruit Hybrid

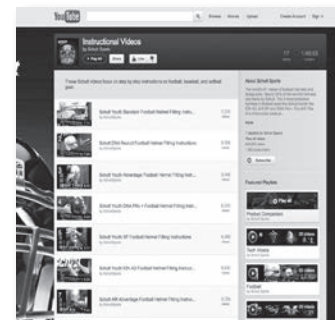
HELMET SIZE	HEAD SIZE	HEAD CIRCUMFERENCE
2X-Small	6 - 6 1/4	19 - 19 1/2"
X-Small	6 1/4 - 6 1/2	19 1/2 - 20 1/2"
Small	6 1/2 - 6 3/4	20 1/2 - 21 1/4"
Medium	6 3/4 - 7	21 1/4 - 22"
Large	7 - 7 1/4	22 - 22 3/4"
X-Large	7 1/4 - 7 1/2	22 3/4 - 23 1/2"

AiR Standard III, AiR Standard V

HELMET SIZE	HEAD SIZE	HEAD CIRCUMFERENCE
X-Small	6 3/8 - 6 5/8	20 - 20 3/4"
Small	6 5/8 - 6 7/8	20 3/4 - 21 1/2"
Medium	6 7/8 - 7 1/8	21 1/2 - 22 1/4"
Large	7 1/8 - 7 1/4	22 1/4 - 23"
X-Large	7 1/4 - 7 1/2	23 - 23 1/2"

NEED A LITTLE MORE HELP WITH FITTING? WE'VE BUILT VIDEOS FOR EACH OF OUR HELMETS ON OUR YOUTUBE CHANNEL:
youtube.com/schuttsports

Or scan this QR Code with your smartphone to go directly to the helmet videos.



HELMET CARE



WARNINGS

Helmet Warranty

The warranty for polycarbonate shells (Vengeance DCT, Vengeance VTD, Vengeance VTD II, Vengeance Pro, AiR XP Pro, AiR XP Pro SV, AiR XP Pro VTD, AiR XP Pro VTD II, AiR XP, DNA PRO+, is five (5) years. In order to honor the shell warranty (after the first year of use), reconditioning by a NAERA certified reconditioner is required every other year. **Use only factory replacement parts to validate the warranty.**

The warranty for ABS shells (Youth Vengeance DCT, Vengeance DCT Hybrid+, Vengeance DCT Hybrid, Youth AiR XP Pro, Youth DNA PRO+, XP Hybrid+, XP Hybrid, Recruit Hybrid+, Recruit Hybrid, AiR Standard III and AiR Standard V) is three (3) years. Although reconditioning is not required to validate the warranty period for youth helmets, it is **recommended** that a regular repair and replacement program be adopted until the helmet is retired. Air liners are warranted for a period of one (1) year. **Helmets covered under the warranties should be returned in whole with all internal components intact** to the Schutt Sports dealer from whom purchased, along with evidence of the purchase date, for return to the Schutt Sports Manufacturing Company. Schutt will inspect the helmet and will determine the disposition of repair or adjustments, or replacement free of charge.

Use of Third Party and Other After-Market Products

All Schutt helmets and face guards are manufactured and certified to meet the current NOCSAE performance standards. Alterations, additions or any component deletions or removals made to the helmet or face guard that do not follow the manufacturer's guidelines may void any applicable warranty to the product and will void the NOCSAE certification of the helmet or faceguard.

Schutt Sports recommends against the use of any third party, aftermarket product or accessory that alters the fit, form or function of the helmet

or face guard. Third party, aftermarket products that are used on a Schutt helmet and do not follow manufacturer's guidelines will void the NOCSAE certification and make the helmet or face mask illegal to use in most organized football leagues, games or other activities.

Helmet Maintenance/Shell Cleaning

Maintenance of the Schutt Helmet System is very simple. Any worn component part is easily replaced or changed, and if a fitting adjustment needs to be made accessory parts may be used. These accessories are available from your local Schutt Sports Dealer.

The Model 8500 Sideline Kit is pre-packaged with many of the items needed to perform routine maintenance for your helmets. If the helmet shell requires cleaning to remove old decals, residue, scuff marks, etc., the Model 7759 Schutt Helmet Care Kit is recommended for this purpose. This kit contains cleaners, polish, sanitizer and deglue to clean 200 - 300 helmets. Other products may void warranties and could adversely affect the protective capabilities of the helmet.

Do **not** apply solvents or strong cleaning agents to the helmet shell, liner or interior parts. Many products sold commercially over the counter contain components that will adversely affect the Schutt Helmet System. If you have a question whether a solvent or cleaner is approved, please contact Schutt Sports for information. If, in cleaning the helmet, the outside WARNING label becomes detached, the label **must** be replaced. Call Schutt Sports Customer service for new labels.

Helmet Useful Life - The Schutt Football Helmet has **no** Useful Life policy or Mandatory Retirement Age. We do, however, suggest that institutions/teams adopt a program of systematic reconditioning & replacement of helmets as no helmet will last forever. This will help to balance the cost of helmets from year to year as well as keep inventory up to date. **Do not use an air liner that is damaged.**

SIZE CHART

Please use the chart as a reference tool or starting point. Everyone's head is shaped differently and the chart may not always indicate the proper size. You should always consider feedback from the player, as well as close examination and inspection, as important tools for obtaining the proper fit. (PRIOR TO HELMET FITTING, MAKE SURE PLAYER READS AND UNDERSTANDS WARNING FOUND ON BACK OF HELMET)

IMPORTANT

For Schutt Air Liner Helmets – The Schutt Helmet System should be checked periodically to see that proper air pressure is maintained for the liner system. Various factors can affect the fit of the helmet, i.e., air temperature, altitude changes, hair length, damage to the valve, etc. Periodic checks should be done to insure that proper fit is being maintained.

AIR STANDARD V

For Schutt AiR Standard V helmets: At a minimum, the Schutt AiR Standard V helmet must be reconditioned **EVERY TWO YEARS** by a NAERA certified reconditioner or discarded. The padding in your Schutt AiR Standard V helmet should be inspected prior to each use. If cracks in the padding system or shell exist, discontinue use of the helmet immediately and have damaged component(s) replaced by a NAERA certified reconditioner. All other warnings pertain to this helmet, as well.

WARNING

Keep your head up. Do not butt, ram, spear or strike an opponent with any part of this helmet or faceguard. This is a violation of football rules and may cause you to suffer severe brain or neck injury, including paralysis or death and possible injury to your opponent. Contact in football may result in Concussion/Brain Injury which no helmet can prevent. Symptoms include: loss of consciousness or memory, dizziness, headache, nausea or confusion. If you have symptoms, immediately stop and report them to your coach, trainer and parents. Do not return to a game or contact until all symptoms are gone and you receive medical clearance. Ignoring this warning may lead to another and more serious or fatal brain injury. **NO HELMET SYSTEM CAN PROTECT YOU FROM SERIOUS BRAIN AND/OR NECK INJURIES INCLUDING PARALYSIS OR DEATH. TO AVOID THESE RISKS, DO NOT ENGAGE IN THE SPORT OF FOOTBALL.** Remember, this warning is of the utmost importance. Important rule changes have eliminated the head as a primary and initial contact area for blocking and tackling techniques. Injury prevention is a primary responsibility of the coaches and the player. Coaching techniques and strict observance of the rules are critical factors in minimizing and preventing serious injuries. Do not use any liquid thread locking materials when attaching the faceguard to the helmet as it may have adverse effects on the helmet.

WARRANTIES



Important—Warranty—Performance

You may replace or change any part or component of the Schutt Helmet System as long as you follow the manufacturer's guidelines. However, alterations, additions or any component deletions or removals you make to the helmet may void this warranty and could adversely affect the protective capabilities of the helmet.

Should there ever be any question regarding the warranty, evaluation or function of a helmet and/or the component parts, please contact Schutt Sports for a free helmet inspection.

Air Liners/Needles

Armor All® protectant is recommended to keep air liners soft and supple. Remove air liner from helmet before applying.

Do not use a mechanical or an electric pump to inflate the air liners. Use only the Schutt Model 7790 Inflation Needle which is specifically designed for air liners. Other needles may damage the air liner. Do not use an air liner that is damaged.

Glycerine is the proper inflation needle lubricant. DO NOT use a petroleum based product such as petroleum jelly. DO NOT WET THE NEEDLE WITH YOUR MOUTH, AS ACIDITY IN SALIVA MAY ALSO DAMAGE THE AIR VALVE.

The name Armor All® is a registered trademark of Armor All® Products Corporation.

Paint Warning

Substances applied to the helmet shell which are not compatible with the shell material can cause deterioration, embrittlement and/or breakage, thereby exposing the wearer to unnecessary risk and danger. Usage of non-compatible paints, polishes and/or cleaners will render the helmet shell unsafe for further use and will void warranties. Use only Schutt approved primer, paint, thinner, polishes, and cleaners. For proper helmet painting, contact a NAERA Licensed Reconditioner or Schutt Service Center. Failure to comply can destroy shell integrity and void warranties. If you have any questions concerning paint applications, please call Schutt Sports at 1-800.426.9784

PRO GLOSS® Paint

In addition to the standard molded and painted colors, Models Vengeance DCT, Vengeance VTD, Vengeance VTD II, Vengeance Pro, AiR XP Pro, AiR XP Pro SV, AiR XP Pro VTD, AiR XP Pro VTD II, AiR XP, DNA PRO+, Youth Vengeance DCT, Vengeance DCT Hybrid+, Vengeance DCT Hybrid, Youth AiR XP Pro, XP Hybrid+, XP Hybrid, Youth DNA PRO+, Recruit Hybrid+, Recruit Hybrid, AiR Standard III and AiR Standard V are offered in a variety of Pro Gloss® colors, a paint designed to enhance helmet appearance, and clean up easier, thus reducing maintenance time, and enabling teams to maintain that "new helmet look" for the entire season. Check the Catalog or call Customer Service for color information.

If your helmet color is not listed in the Catalog, Schutt Sports has the ability to match any paint color.

Schutt Vision Warranty

The warranty for the video system in SV Model helmets is executed by Sports Video Innovations, Shreveport, Louisiana. Sports Video Innovations products and accessories are guaranteed against manufacturing defects one (1) year from the original date of purchase. Sports Video Innovation's sole obligation in the event of such defects during this period is to repair or replace the defective part or product with a comparable part or product at Sports Video Innovation's sole discretion. Except for such repair or replacement, the sale, processing or other handling of this product is without warranty, condition or other liability even though the defect or loss is caused by negligence or other fault. Sports Video Innovations assumes no liability for any accident, injury, death, loss, or other claim related to or resulting from the use of this product or any of its parts. Damage to the electronics due to water is not covered. Returns or replacements of parts and/or products may be subject to shipping, handling, replacement and/or restocking loss.

Schutt

RECONDITIONING

YOUR HELMETS. YOUR PARTS.

The same parts that you send in with your helmets get sent back to you with your helmets.

SAND BLASTING FOR YOUR PAINTED HELMETS.

We sandblast helmets as needed, for better paint adhesion and better looking finished helmets.

MADE IN THE USA.

We're proud to be an American manufacturer. All our recon work is done in the USA and in one facility.

#1 Reconditioning

sales@schuttrecon.com

800.818.3892

schuttreconditioning.com

CHECKLIST



FOOTBALL COACHES, EQUIPMENT MANAGERS, ATHLETIC TRAINERS SUGGESTED INSPECTION CHECKLIST:

1. Check helmet fit in accordance with manufacturer's instructions and procedures.
2. Examine shell for cracks, particularly noting any cracks around holes (where most cracks start) and replace any shells that have cracked.

MANY CRACKS IN THE SHELL ARE INADVERTENTLY CAUSED BY OVERTIGHTENING OF THE FACEGUARD SCREWS OR APPLICATION OF A THREAD LOCK SUBSTANCE. DON'T USE A HELMET WITH A CRACKED SHELL.

3. Examine all mounting rivets, screws, hook/loop tape and snaps for breakage, distortion and/or looseness. Replace components as needed.
4. Replace faceguards if bare metal is showing, or if guard has spread (flattened out) or sprung (opened up).
5. Examine internal components of helmet and replace any parts which have become damaged such as Jaw Pads, Chin Straps, Front Sizers, Back Sizers, Crown Pad and Side Pads.
6. Inspect the hardware to see if it needs replacement.
7. Read instructions provided by manufacturer regarding care and maintenance procedures. Always follow these instructions. Use only manufacturer's approved parts when replacements are needed.
8. Never allow anyone to sit on helmets. This could cause the fit of the helmet to change.

CAUTION: Only paints, waxes, decals or cleaning agents approved by the manufacturer are to be used on any helmet. It is possible to get a severe or delayed reaction by using unauthorized materials, which could permanently damage the helmet shell and affect its performance and durability.

PLAYERS: It is your responsibility to inspect your helmet prior to use as follows:

1. Do not use this helmet unless all pads are securely in place in compliance with fitting instructions. Size designations are for use as guidelines only. Be sure helmet is properly fitted before participating in the sport.
2. Follow recommended practice for adjusting air pressure, if needed, to ensure proper fit.
3. Check internal components of helmet for proper placement and integrity. Replace parts as needed.
4. Check all rivets, screws, hook/loop tape and snaps to assure they are properly fastened and holding protective parts.

If any of the above inspections indicate a need for repair and/or replacement, notify your football coach, equipment manager or athletic trainer immediately. This is your responsibility. NEVER WEAR A DAMAGED HELMET.

USE YOUR HELMET PROPERLY

WARNING

Keep your head up. Do not butt, ram, spear or strike an opponent with any part of this helmet or faceguard. This is a violation of football rules and may cause you to suffer severe brain or neck injuries, including paralysis or death and possible injury to your opponent. Contact in football may result in Concussion/Brain Injury which no helmet can prevent. Symptoms include: loss of consciousness or memory, dizziness, headache, nausea or confusion. If you have symptoms, immediately stop and report them to your coach, trainer, and parents. Do not return to a game or contact until all symptoms are gone and you receive medical clearance. Ignoring this warning may lead to another and more serious or fatal brain injury. **NO HELMET CAN PROTECT YOU FROM SERIOUS BRAIN AND/OR NECK INJURIES INCLUDING PARALYSIS OR DEATH. TO AVOID THESE RISKS, DO NOT ENGAGE IN THE SPORT OF FOOTBALL.**

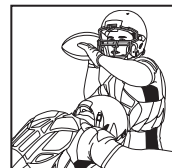


DO NOT ALTER YOUR EQUIPMENT

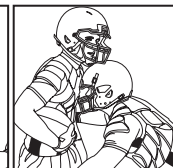
- The helmet has not been designed to be used as a weapon.
- Use of the helmet with improper blocking and/or tackling techniques may result in serious injury.
- No protective product can totally eliminate the inherent physical risks of football.
- Know what your equipment can and cannot do. That includes your helmet, faceguard, shoulder pads, and all protective padding.
- Listen to your coach, trainer and equipment manager.
- The more you know about football and the proper fitting of the equipment you use, the better you'll play.
- Understand how your equipment can and cannot protect you.
- If the fit of your helmet changes, notify your coach, trainer or equipment manager immediately.

It is important that you wear professionally manufactured equipment.

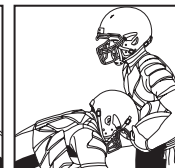
The danger in these techniques is that too often the player's head is not in the proper position when contact is made with the opponent. The neck is most vulnerable to injury when your head is down. Your head goes down because improper technique is being used. A blow to the top of the head when the neck is straightened is the most frequent cause of permanent injury. Only legal techniques should be taught or practiced.



BUTT BLOCKING
ILLEGAL



FACE TACKLING
ILLEGAL



SPEARING
ILLEGAL